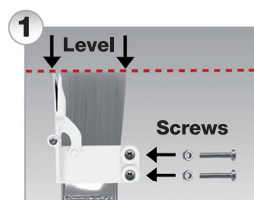
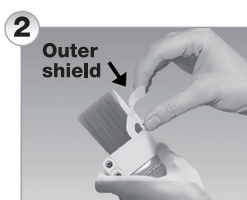


PAINT EDGER

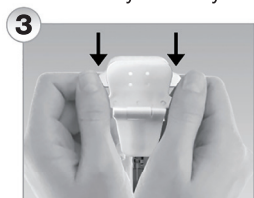
ASSEMBLY



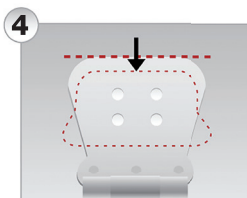
VERY IMPORTANT STEP!
Attach edger to brush.
The top of the brush
bristles must be **EXACTLY**
EVEN with the tip of the
shield then tighten the
screws very securely.



Separate shields by
bending back outer
shield to create space
between both shields.

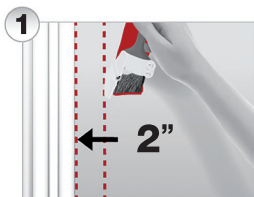


Hold fabric insert by it's
"ears" and pull down into
the bottom of the
reservoir.

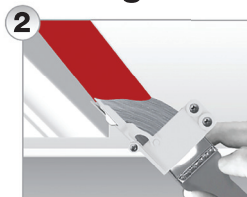


Fabric insert should rest
1/8" below the tips of the
shields. This is very
important!

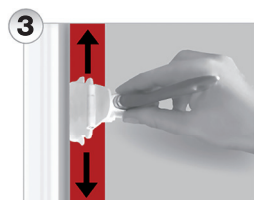
How to PAINT Edge



Begin painting 2 inches
off edge, then "cut-in" to
the edge.



While painting the edge,
you must hold the
paintbrush at an extreme
sideways angle.



Hold brush lightly and
make sure to keep tips of
shield pressed against
edge while painting in
up and down motion.




EMERY EDGERS



PAINT EDGER

**NO
PAINTER'S
TAPE
NEEDED**

**WORKS
WITH ALL
PAINTS
AND
STAINS**

**NO
PAINTER'S
TAPE
NEEDED**

**WORKS
WITH ALL
PAINTS
AND
STAINS**


EMERY EDGERS